

# Ancient Greek Art

---

WALT: Plan, design and make models from observation or imagination.

# Ancient Greek Pots

- Pots were used for lots of different things.
- There were different shapes for different functions.



# Ancient Greek Pots

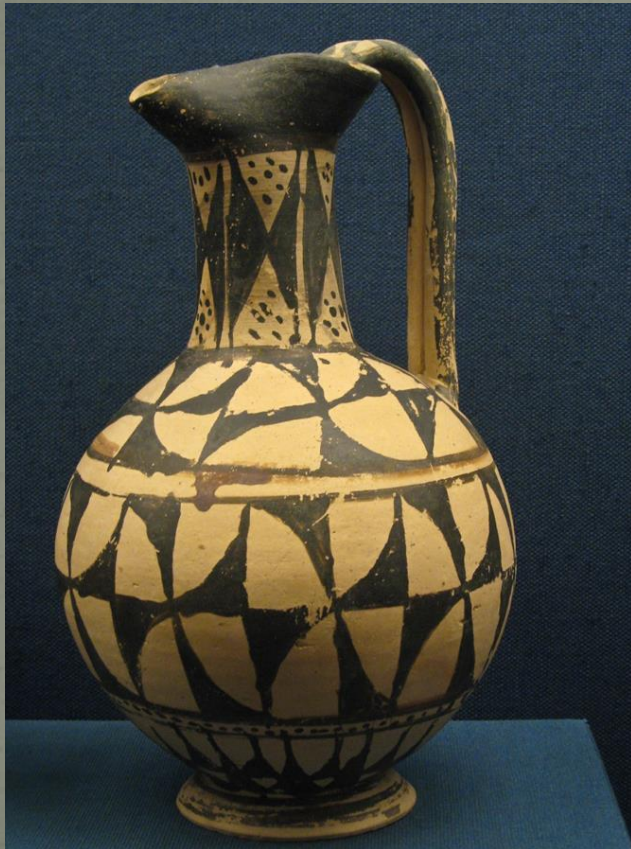
- Greek pots are important because they tell us so much about how life was in Athens and other ancient Greek cities.
- The making of the pots usually took two people, the potter and the painter. The potters would have made more profit than the painters.
- Only men were allowed to make pots in Ancient Greece, although women were allowed to decorate them.





# Ancient Greek Pots

- The first pottery was decorated with lots of geometric patterns.



# Ancient Greek Pots

- Then came black figure pottery.
- The design was made using slip that turned black when fired in the kiln.
- White or purple detail was added afterwards.





# Ancient Greek Pots

- The red figure technique was invented around 530bc.
- This time, the rest of the pot was painted with slip rather than the figures and patterns. Detail was added later.



# Plan and Design

- Your job this week is to plan and design your own Greek pots.
- First, you need to study as many as possible. You need to think about what the picture on the pots is telling us.
- Does it show something about everyday life in Greece, like going to fetch water, something a bit more special like the Olympics, or perhaps something from a Greek myth or something to do with one of the gods?
- Look at the patterns on it too, they often had geometric designs at the top and bottom. Practise drawing some of these first.



# Plan and Design

- Then you need to choose some ideas that you will draw onto some pot templates. Make them as like ancient Greek ones as you can. Think carefully about the colours you choose – I have never seen any green on a Greek pot. Why do you think this is?
- When you have finished that, if you have any clay or playdoh, you could have a go at making a simple Greek pot. You do not have to do this if you don't have anything suitable to make one with. The next few slides will show you how.





# Make a Pot

- Coil and pinch (thumb) pottery are two simple techniques that can have great results.



# Make a Pot — Coil Pot

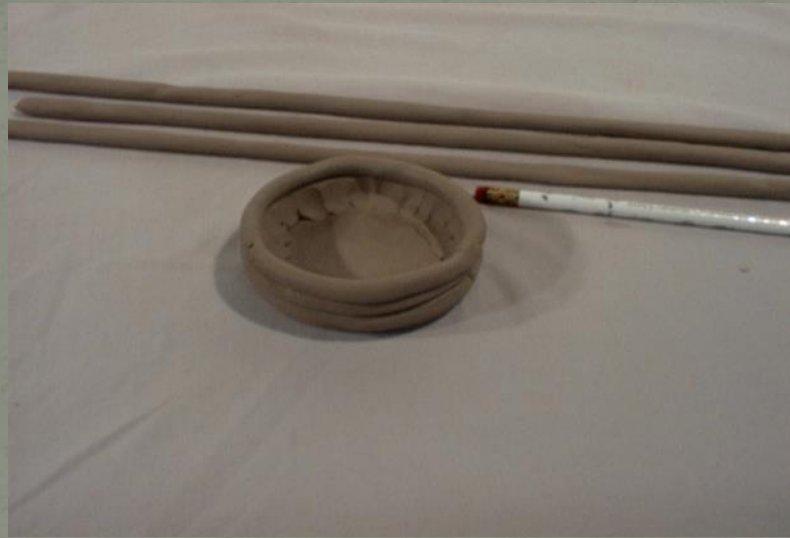
- Squeezing the clay into a coil or rolling between your hands are two ways to make coils.





# Make a Pot — Coil Pot

- Roll the coils so that they are a little thicker than a pencil. Then stack the coils one on top of another cutting off the excess pieces.



# Make a Pot — Coil Pot

- For strength, force the clay together on the inside and outside of the piece. Use your finger or plastic knife to scrape the top coil onto the coil under it.





# Make a Pot — Coil Pot

- When you are happy with the size and length of your pot gently smooth inside and outside.
- When smoothing the inside of the piece hold your other hand on the outside and when doing the outside the other hand should be supporting the inside. This will stop you damaging and mis-shaping your pot.



# Make a Pot — Coil Pot

- You can level the top by turning turn your pot over and lightly tapping it on a smooth surface.





# Make a Pot — Pinch Pot

- The first step to making your pinch pot is to start the opening. Cradle the ball of clay in one hand and gently press the end of your thumb into the clay. A good method is to press down a bit with your thumb and then give the clay a bit of a turn — press down some more and then give it another little turn



# Make a Pot — Pinch Pot

- The idea is to gently press the clay from the inside with your thumb against your fingers on the outside. Each time you press a bit with your thumb, give the clay a bit of a turn before you press again. It doesn't matter if you turn the pot clockwise or anti-clockwise, just work in a way that seems natural to you.





# Make a Pot — Pinch Pot

- This photo shows the technique from a different angle. If you curve your fingers slightly, you can control the shape a bit better and make a more rounded form. If your fingers are held flat against the outside, the pot rim will flare out more to make an open bowl shape. Continue the pinching and turning method until the walls of the pot are thinned out to a thickness that seems about right to you.



# Make a Pot — Pinch Pot

- With a bit of patience and practice, it is possible to make quite a finely crafted bowl with this simple technique. The main thing to remember while working is to try for an even wall thickness as you pinch your way around the bowl.

